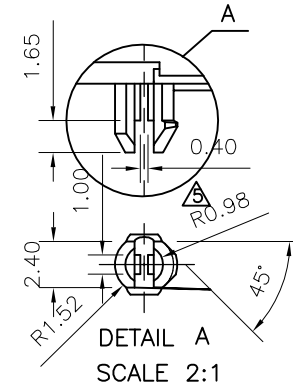
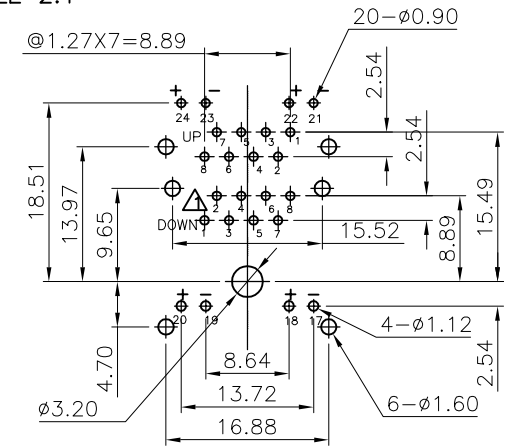


FOR P/N: E5J88-D4LXFX



REVISION RECORD				
REV	ECO	DESCRIPTION	DRFT	CHKD
△		DRAWING MODIFY	IRONDR	
△		ADD NEW P/N	11/28/02	
△		DRAWING MODIFY	Jake	
△		ADD NEW P/N	08/07/03	
△		DRAWING MODIFY	Jake	
△		ADD NEW P/N	08/23/03	
△		DRAWING MODIFY	Jake	
△		ADD NEW P/N	10/22/03	
△		DRAWING MODIFY	PETERS	
△		ADD NEW P/N	10/28/04	
△		ADD NEW P/N	PETERS	
△		ERASE P/N	02/28/05	
△		ERASE P/N	05/26/05	



PC Board Layout
Component Side Shown

NOTES:

ELECTRICAL:

- VOLTAGE RATING : 125 VAC RMS.
- CURRENT RATING : 1.5 AMP.
- CONTACT RESISTANCE : 50 MILLIOHMS MAX.
- INSULATION RESISTANCE: 1000 MEGOHMS MIN @ 500 VDC.
- DIELECTRIC STRENGTH : 1000 VAC RMS 60Hz, 1MIN.

MECHANICAL:

- HOUSING MATERIAL : GLASS FILLED POLYESTER UL94V-0.
- CONTACT MATERIAL : PHOSPHOR BRONZE Ø0.46mm.
- PLATING : 1: CONTACT AREA- SELECTIVE GOLD PLATING.
2: TAILS- 150u" TIN-LEAD MIN OVER 50u" NICKEL.
- OPERATING LIFE : 750 CYCLES MIN.
- PCB RETENTION PRE-SOLDER : 1 LB MIN.
- PCB RETENTION POST-SOLDER: 10 LBS MIN.
- LED COLOR : GREEN

ENVIRONMENTAL:

- STORAGE : -40°C TO +85°C.
- OPERATION: 0°C TO 70°C.

MATES WITH MODULAR PLUG CONFORMING TO FCC PART 68, SUBPART F.

W/ TIN NUMBER: E5J88-XXLXFX

- A-LED1:GREEN, LED2:GREEN
 - B-LED1:GREEN, LED2:ORANGE
 - C-LED1:GREEN, LED2:YELLOW
 - L-LED1:YELLOW, LED2:GREEN
 - △D-LED1:G+R, LED2:G+R
 - △F-LED1:ORANGE, LED2:GREEN
- 1- 3u" 2- 6u" 3-15u"
 - 4-30u" 5-50u"
 - 0- W/O "FRE" LOGO
 - 2- W/ "FRE" LOGO
 - △3- W/ "FRE" LOGO A05-0130
 - 1- NO TAB △
 - 4- TOP TABS & SIDE TABS

← MM (INCH) →		DFTO LUSHENG	DATE 12/13/01
TOLERANCES EXCEPT AS NOTED		CHKD JWE	DATE 2005/5/28
		MFO	DATE
		APPV LUSHENG	DATE 2005/5/28
MM			
.0	±0.20		
.00	±0.15		
.000	±0.075		
ANGLES ±			
THIRD ANGLE PROJECTION			

FULL RISE ELECTRONIC CO., LTD

TITLE RJ45(LED)
STACKED GANGED JACK, 2X1

DRAWING NO. GE5J3021
/PART NO. SEE NOTE

DO NOT SCALE DRAWING SHEET 1 OF 1